

**64 Unwin Street Bexley NSW**

3 2 2

Unlock the opportunity you've been patiently waiting for: the chance to build your dream house. This property's location is unparalleled, offering panoramic and forever unobstructed views of the golf course—a truly rare and thrilling opportunity to create and reside in upscale property on the enchanting Bexley Golf Course.

**Price** : \$ 1,960,000  
**Land Size** : 620 sqm  
**View** : <https://www.powerpropertygroup.com.au/7712482>

The existing double-brick home boasts three spacious bedrooms, separate lounge and dining areas, and oozes timeless character and charm, high power air conditioning. Revel in the convenience of being just moments away from the vibrant hubs of Bexley and Kingsgrove, only a 5 minute drive to Hurstville Shopping Centre and Train Station, quick access to the M5 motorway, proximity to St. George Hospital, a wealth of local amenities, seamless public transportation options, and effortless connections to Sydney Airport and the bustling Sydney CBD. Don't let this



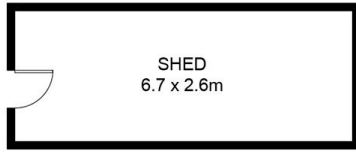
**Peter Gribilas**  
95334757



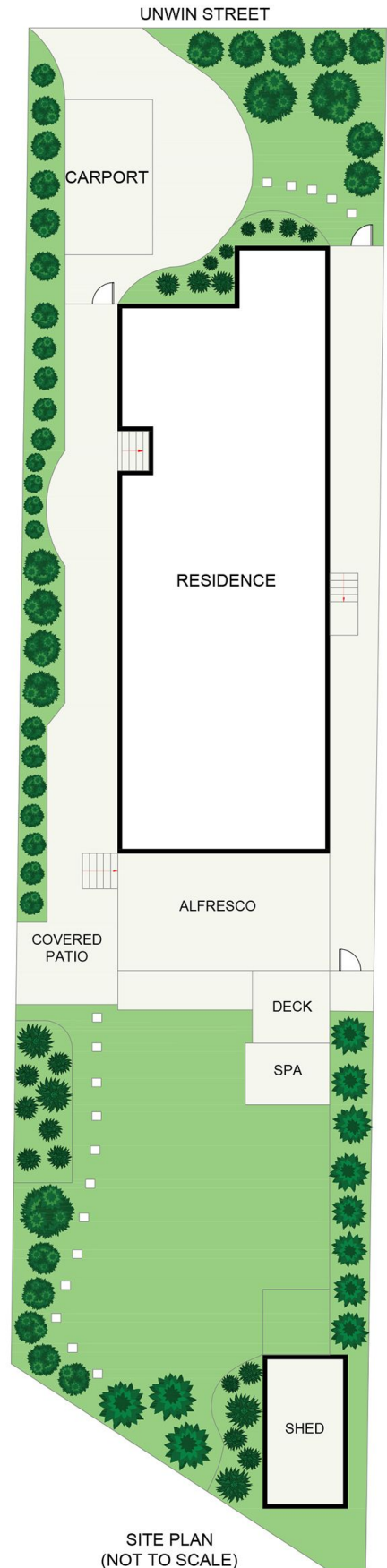
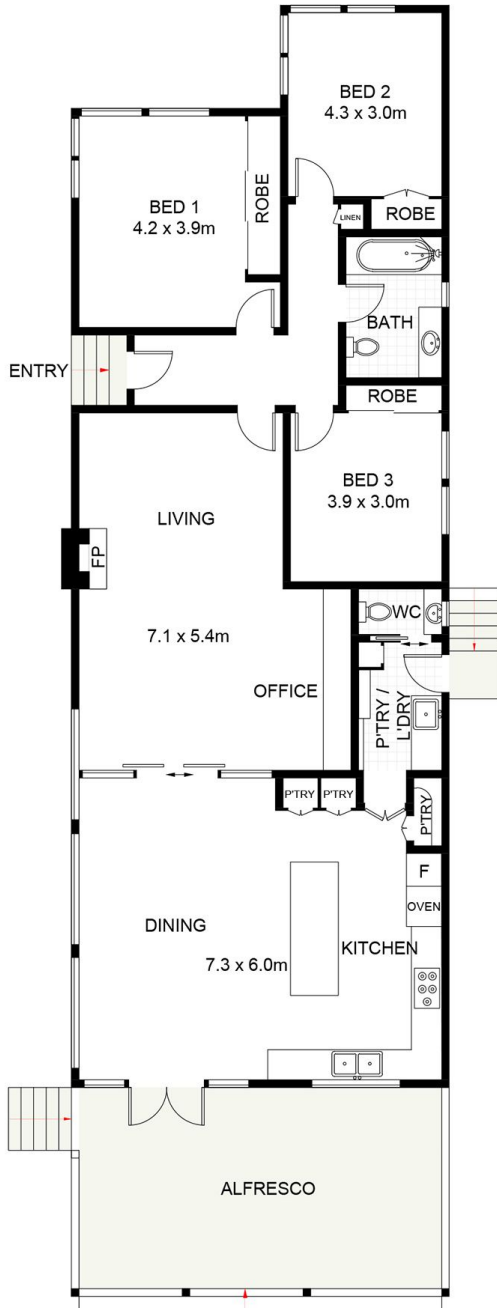
**Kristian Contos**  
95334757



CARPORT  
5.5 x 3.1m  
(NOT SHOWN IN ACTUAL  
LOCATION / ORIENTATION)



SHED  
6.7 x 2.6m  
(NOT SHOWN IN ACTUAL  
LOCATION / ORIENTATION)



SITE PLAN  
(NOT TO SCALE)



## 64 Unwin Street, Bexley

Scale in metres. Indicative only. Dimensions are approximate. All information contained herein is gathered from sources we believe to be reliable. However, we cannot guarantee its accuracy and interested persons should rely on their own enquiries. Some images may contain digital furniture.