

4/6 Moate Avenue Brighton-Le-Sands, NSW



2 Bedroom Apartment in the Heart of Brighton Le Sands?

Superbly located, this bright and airy two-bedroom apartment is only steps away from the sandy shores of Brighton Le Sands beach, restaurants, cafes, shops & schools. Ideally situated on the ground floor within a security building of 8, ideal for first home buyers or those seeking an easy maintenance lifestyle featuring two spacious bedrooms, open plan living and dining flowing to an entertainer's balcony. Make this one a must to see!

Features include:

- 2 spacious bedrooms, main bedroom with built in wardrobe
- Open plan living & dining with an abundance of natural light
- Neat wooden kitchen with ample storage space

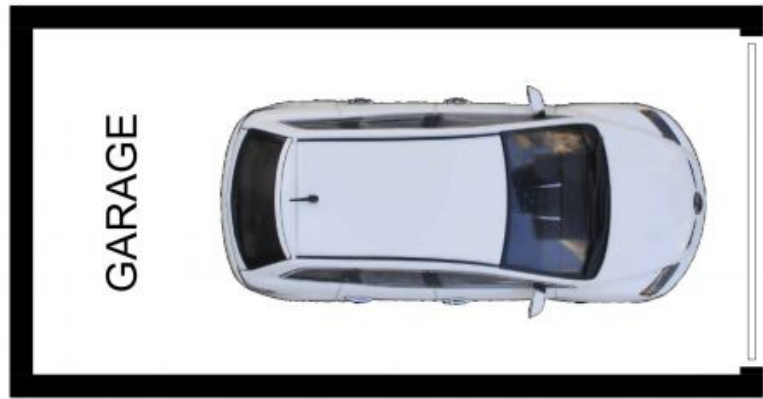
Council Rates: \$359.00 p/q

Water Rates: \$183.24 p/q

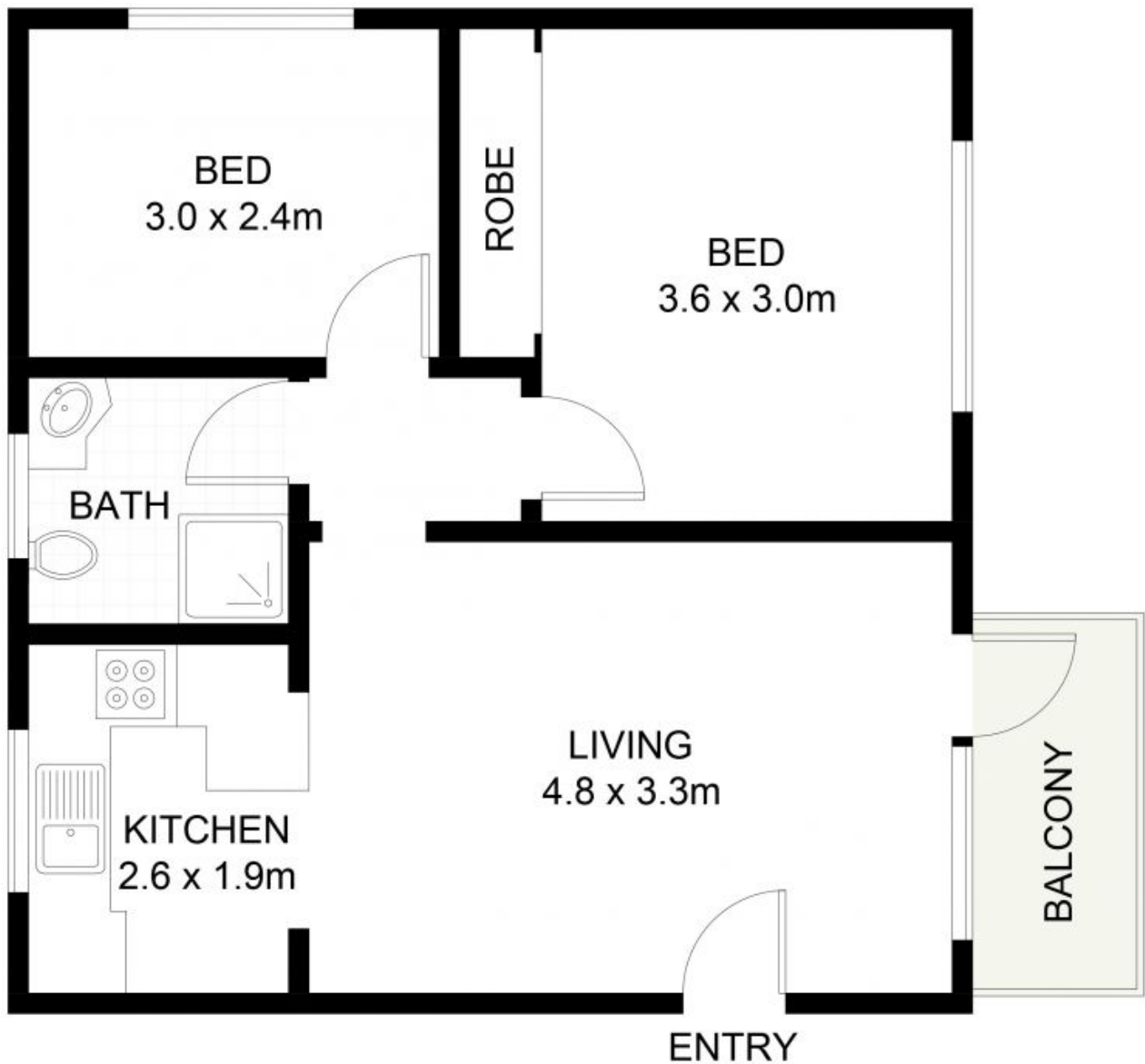
Strata Rates: \$721.00 p/q

Peter Gribilas

0434 016 127



(NOT SHOWN IN ACTUAL LOCATION / ORIENTATION)



4/6 Moate Avenue, Brighton Le Sands

Scale in metres. Indicative only. Dimensions are approximate. All information contained herein is gathered from sources we believe to be reliable. However, we cannot guarantee its accuracy and interested persons should rely on their own enquiries.

4/6 Moate Avenue

Brighton-Le-Sands, NSW