



903/2 Chisholm Street Wollri Creek, NSW



2



2



1

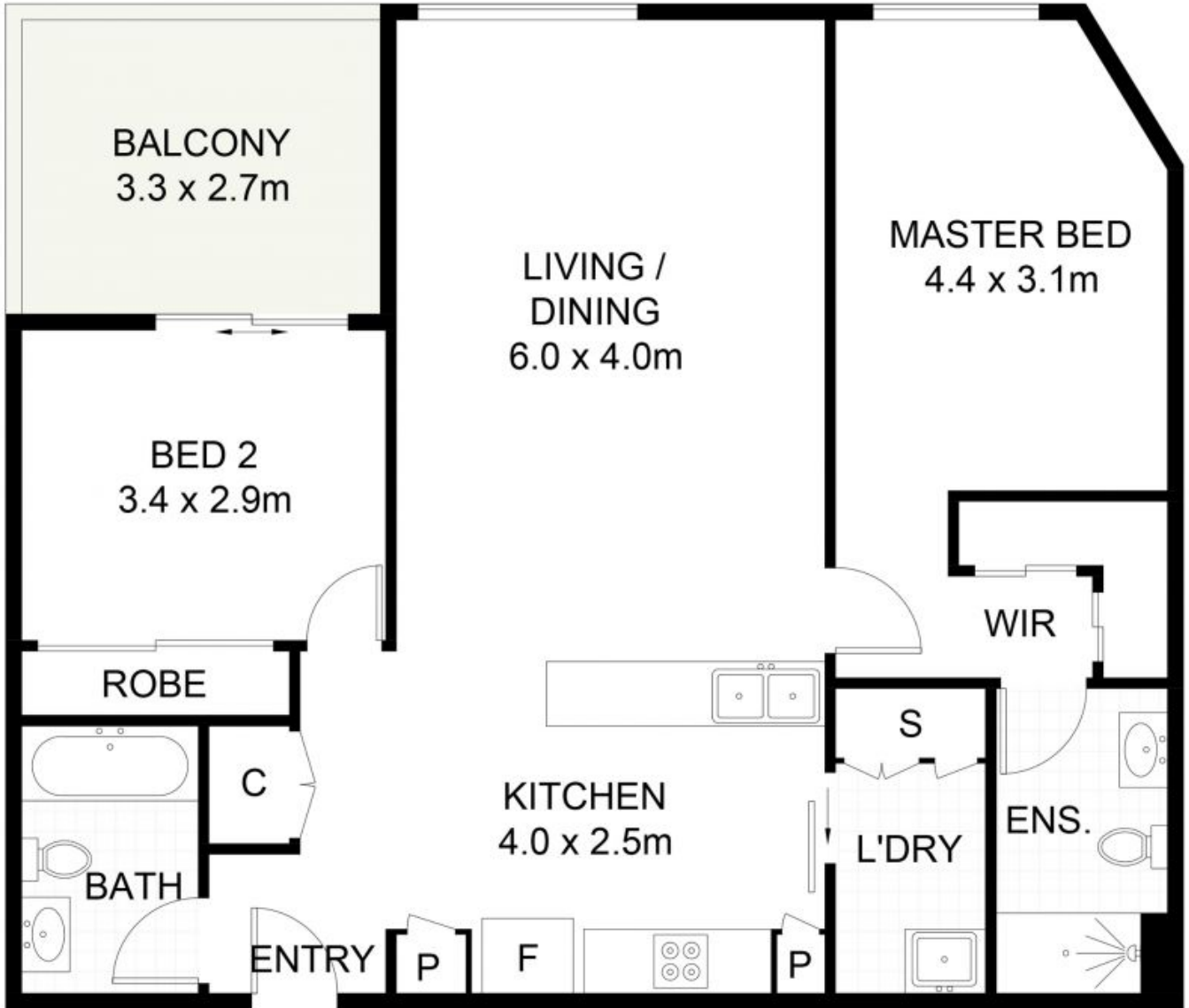
Luxurious 2 Bedroom Apartment with Water Views!

Features include:

- 2 spacious bedrooms both with BIR, main with access to ensuite
- Open plan living and dining areas with ducted air conditioning throughout
- Stunning kitchen with SMEG cooking appliances & gas cooking
- Modern bathroom tiled from floor to ceiling + internal laundry
- Entertainers' balcony overlooking stunning water views with 2-way access
- Building facilities include a full functioning gym & an indoor pool
- Basement parking with car space & lock up storage for convenience
- Minutes to local schools, shops, cafes, restaurants, transport & Sydney CBD

Peter Gribilas

0434 016 127



STORAGE



(NOT SHOWN IN ACTUAL
LOCATION / ORIENTATION)



903/2 Chisholm Street, Wollri Creek

Scale in metres. Indicative only. Dimensions are approximate. All information contained herein is gathered from sources we believe to be reliable. However, we cannot guarantee its accuracy and interested persons should rely on their own enquiries. Some images may contain digital furniture.

903/2 Chisholm Street

Wollri Creek, NSW