



301/395-397 Princes Highway Rockdale, NSW



2



2



1

Ultra-Modern Designer Apartment!

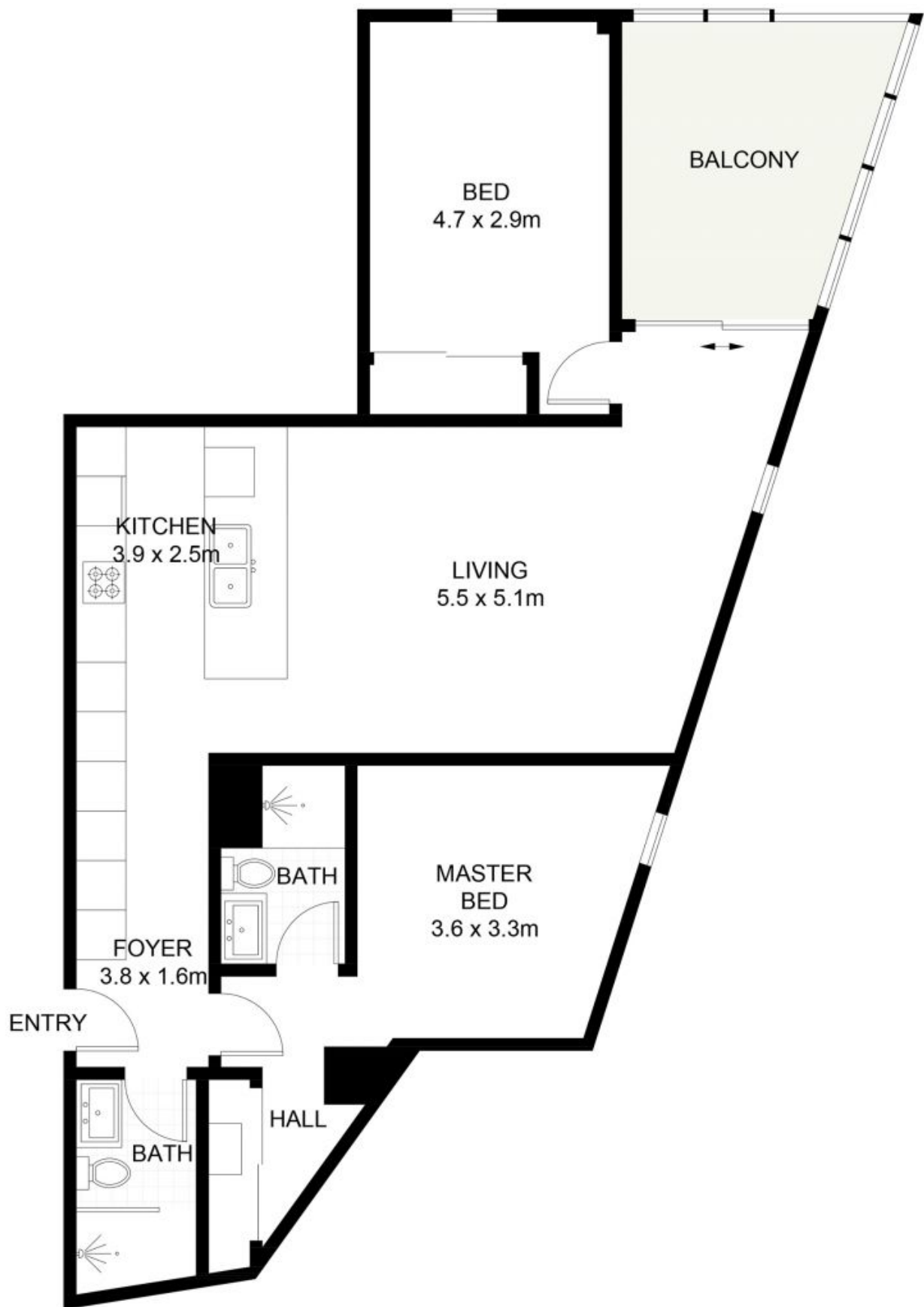
This near new two-bedroom apartment is a short stroll to Rockdale CBD. Presenting neat and tidy interiors, buyers will appreciate the versatile floorplan with 2 oversized bedrooms, open plan living and dining flowing out to an entertainers' balcony! Enjoy easy access to Rockdale Train and Bus Stations, local schools, cafes and eateries and a short drive to Sydney Airport and Sydney CBD.

Features include:

- Two bedrooms with built-in wardrobes, main with ensuite
- Large open plan living & dining areas with ducted A/C throughout, with separate zones
- Modern gas kitchen with S/S appliances, dishwasher & stone benchtops
- Chic fully tiled bathrooms + internal laundry with dryer

Peter Gribilas

0434 016 127



301/395-397 Princes Highway, Rockdale

Scale in metres. Indicative only. Dimensions are approximate. All information contained herein is gathered from sources we believe to be reliable. However, we cannot guarantee its accuracy and interested persons should rely on their own enquiries. Some images may contain digital furniture.

301/395-397 Princes Highway

Rockdale, NSW