

10A/57a Rhodes Street Hillsdale, NSW

 2  2  1

Ultra Modern & Convenient Location

Tightly held in an Industrial Complex, this space is close to Southpoint Shops and Heffron Park, with the added convenience of a bus service within walking distance. This space was previously used as a builder showroom and has been finished to a very high standard

Features include:

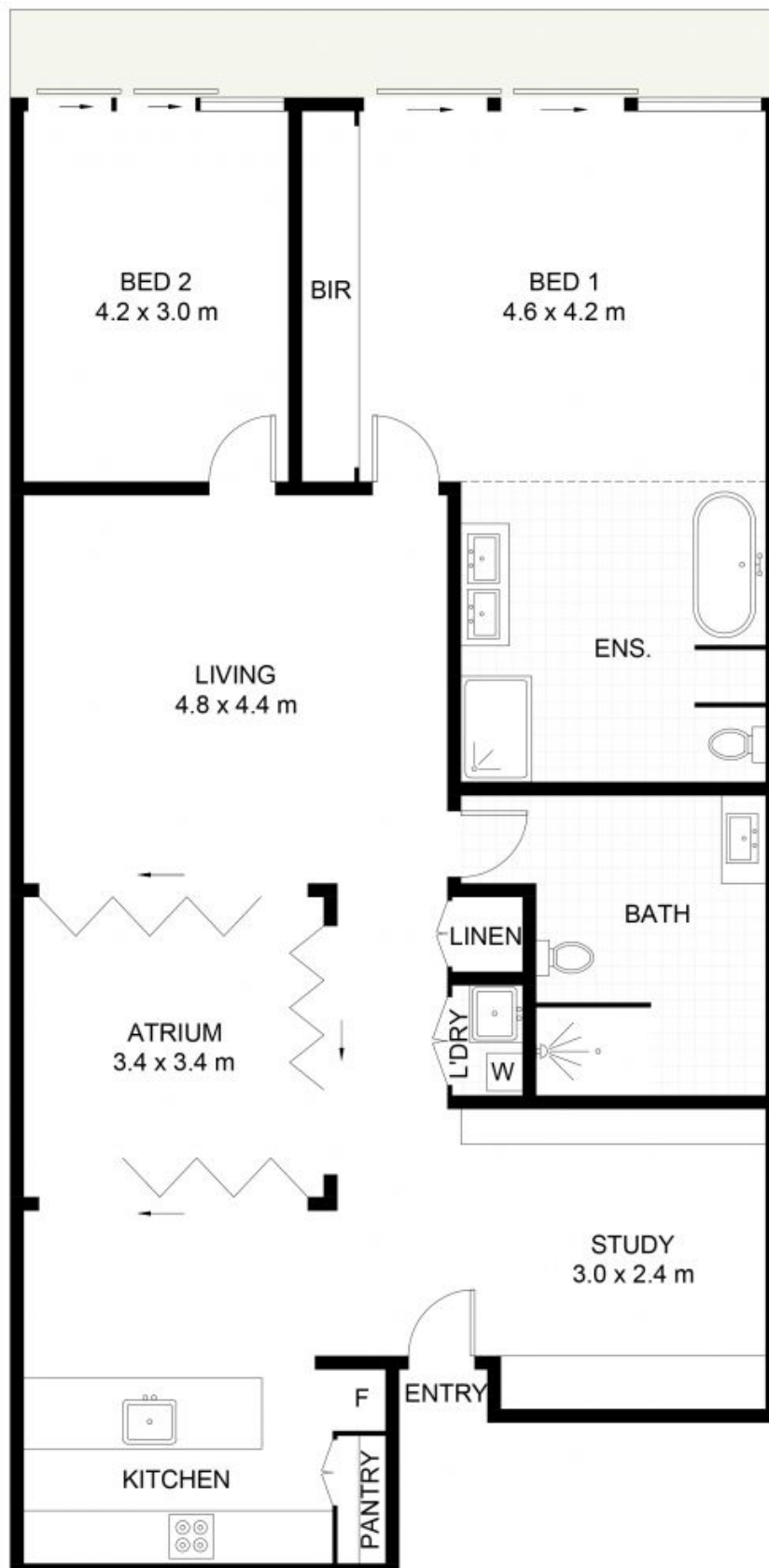
- Modern, fully-equipped kitchen with stainless steel appliances.
- Designer bathrooms with freestanding bathtub
- Fully Ducted A/c
- Office Area
- Internal Laundry
- Plenty of onsite parking in secure car park

Peter Gribilas

0434 016 127

Margaret Chan

0421 211 138



10A/57A Rhodes Street, Hillsdale

Scale in metres. Indicative only. Dimensions are approximate. All information contained herein is gathered from sources we believe to be reliable. However, we cannot guarantee its accuracy and interested persons should rely on their own enquiries. Some images may contain digital furniture.

10A/57a Rhodes Street

Hillsdale, NSW