



4/6 Moate Avenue Brighton-Le-Sands, NSW

 2
  1
  1

BEACH SIDE LIFESTYLE!

Superbly located, this bright and airy two-bedroom apartment is only steps away from the sandy shores of Brighton Le Sands beach, restaurants, cafes, shops & schools. Situated comfortably on the ground floor within a security building of 8, ideal for first home buyers or those seeking an easy-care lifestyle and the convenience of having all that they need within a leisurely stroll away from their doorstep.

Features include:

- * Combined living/dining
- * 2 bedrooms, built in to main
- * Updated kitchen
- * Well presented bathroom
- * Sun lit balcony off lounge room

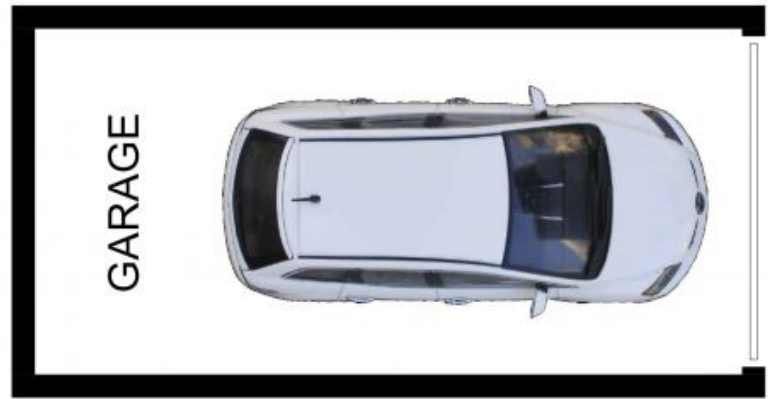
Council Rates: \$359.00 p/q

Water Rates: \$183.24 p/q

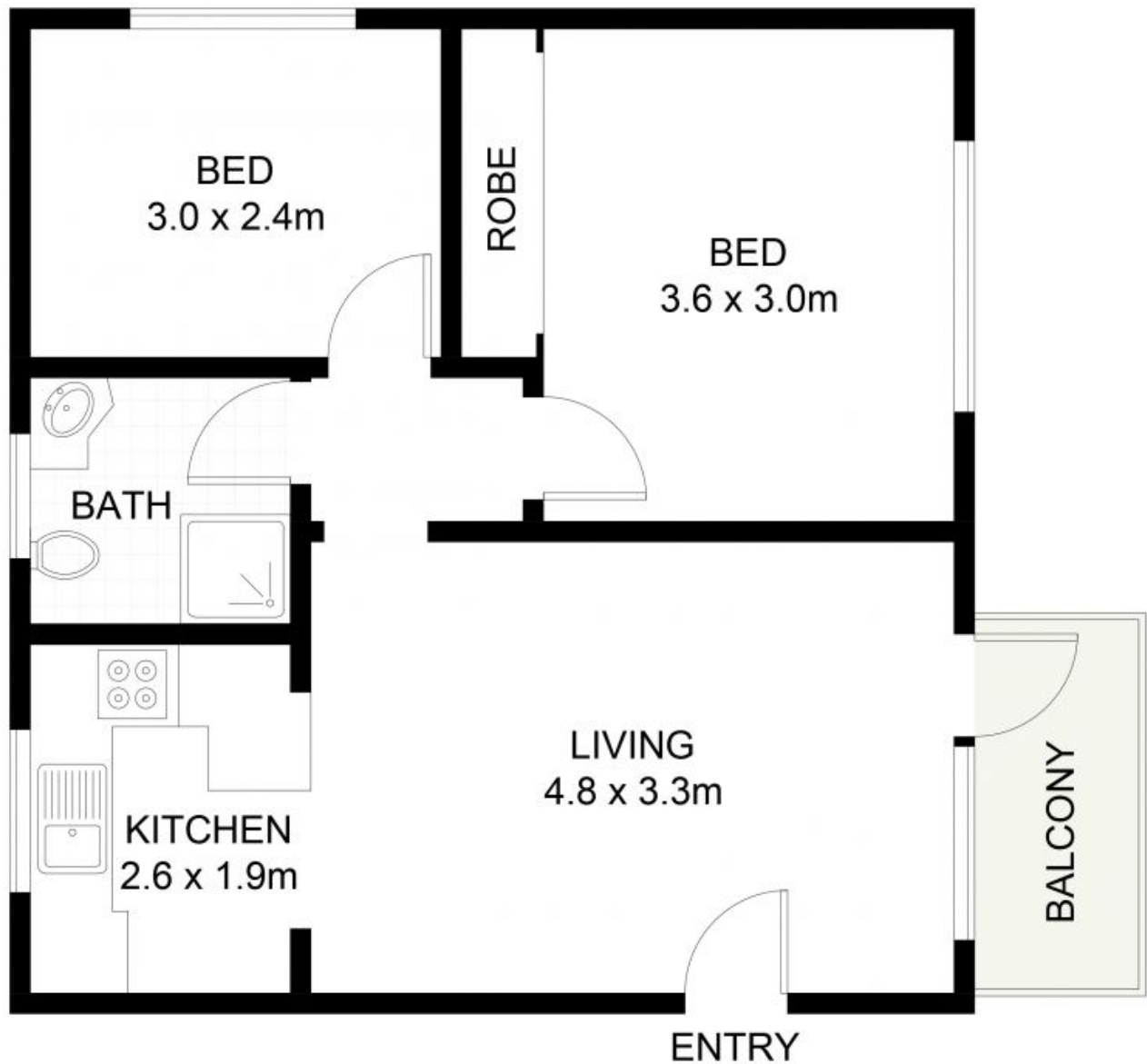
Strata Rates: \$721.00 p/q

Peter Gribilas

0434 016 127



(NOT SHOWN IN ACTUAL
LOCATION / ORIENTATION)



4/6 Moate Avenue, Brighton Le Sands

Scale in metres. Indicative only. Dimensions are approximate. All information contained herein is gathered from sources we believe to be reliable. However, we cannot guarantee its accuracy and interested persons should rely on their own enquiries.

4/6 Moate Avenue

Brighton-Le-Sands, NSW