

336 Stoney Creek Road Kingsgrove, NSW



Light-Filled Home Full Of Potential

UNDER CONTRACT!!!

Set over a total land size of 702m² (approx) this solid double brick 5 bedroom house is a:

Developers dream (Large Duplex Site S.T.C.A. 15.55m frontage x 45.15m)

Ideal for an astute investor (current great rental return of \$1270 per week plus development potential)

Perfect for a large family (Multiple living areas and unique layout)

Other great features include:

? Two separate generous living areas

Council Rates: \$509.00 p/q

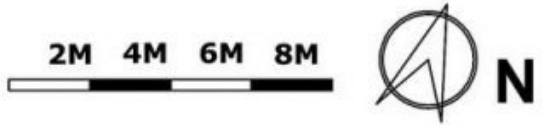
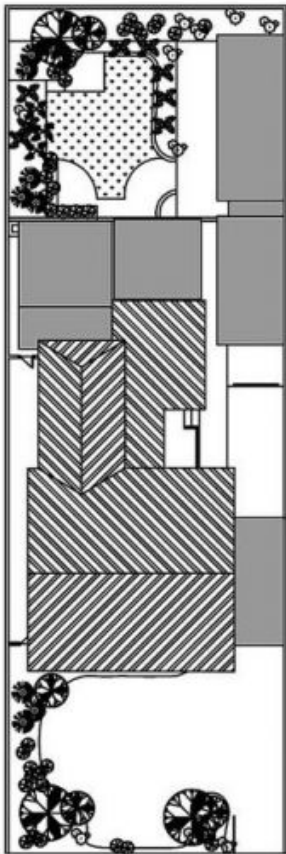
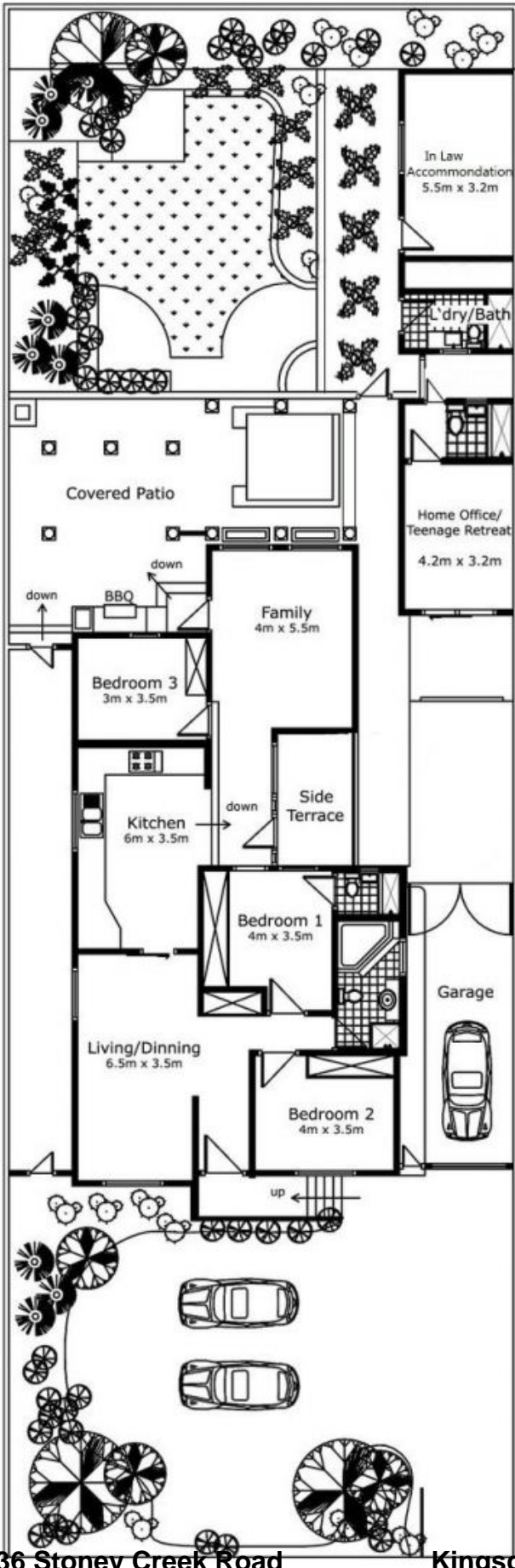
Water Rates: \$198.89 p/q

Peter Gribilas

0434 016 127

Matthew Bennett

0466043043



FLOOR PLAN

**336 Stoney Creek Road
Kingsgrove, NSW 2208**

Disclaimer

This is for illustrative purpose only. All dimensions are approximate and it does not constitute part of any legal documents

336 Stoney Creek Road Kingsgrove, NSW